



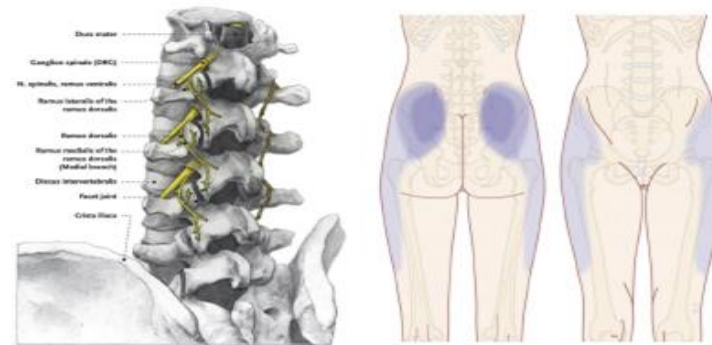
**What is RF Lesioning**

Radiofrequency RF lesioning has become one of the most popular and most effective techniques used to treat chronic pain disorders. In this method an RF current is used to thermocoagulate selected sensory nerves or tissue.

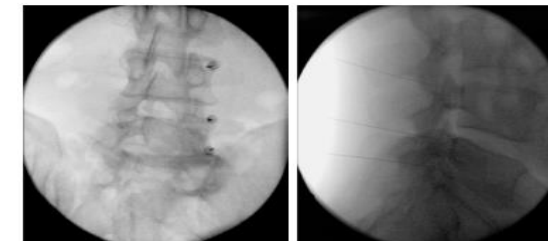
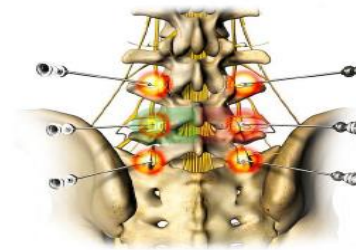
Radiofrequency has been used to treat diseases such as:

- Chronic Mechanical Pain not relieved by conservative treatment
  - Cervical Pain
  - Thoracic Pain
  - Lumbar Pain
  - Sacroiliac Pain
- Intractable Cancer Pain
  - Percutaneous Cervical Cordotomy
  - Splanchnic Nerve
- Tic Douleureux (Gasserian Ganglion RF)
- Discogenic Pain
- Parkinson's Disease Tremor

**Pain Originating from the Lumbar Facet Joints**



Anatomy of the lumbar spinal column



Radiofrequency treatment of L3, L4, and L5 dorsal rami/facet, oblique view. Radiofrequency treatment of L3, L4, and L5 dorsal rami/facet, lateral view.

Pain referral pattern of lumbar facet pain adapted



Authorised Distributor

**RIFF RAFF PAIN CAST SDN BHD** (1174701-X)

18-2 (Level 2) Block F, Vista Magna, Jalan Prima 1, Metro Prima 52100 Kepong, Kuala Lumpur, Malaysia.  
Tel: +603-6243 0223 Fax: +603-6243 0228 Email: rrpc@riffraffpaincast.my